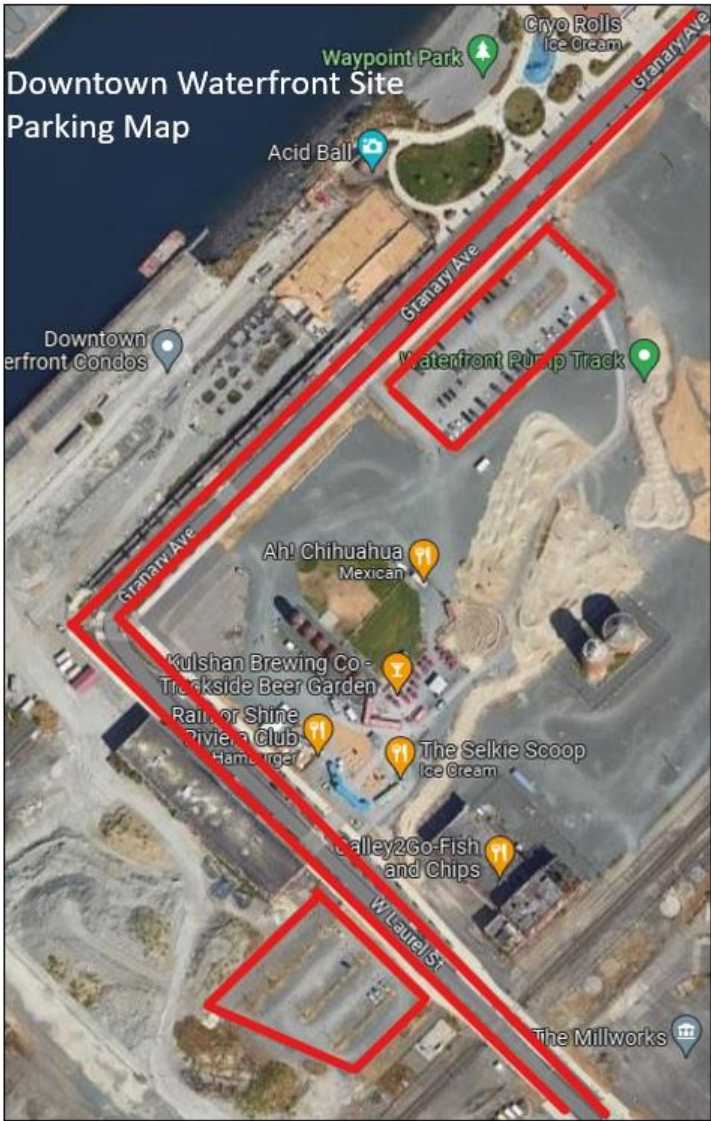


Parking at the Downtown Waterfront

There are two public parking lots for the Downtown Waterfront – the lot along the pump track on Granary Avenue (indicated on map below), and the lot at the end of the Boardmill Building on W Laurel Street (indicated on map below). Along with the two lots, parking along Granary Avenue & W Laurel Street is all free street parking.



All parking at the Downtown Waterfront is shared with customers for the tenants in the Granary Building and the Portal Container Village.

We highly recommend that events encourage attendees to use alternative parking options in the adjacent areas. Options include the Commercial Street Parking Garage, the Railroad Garage, The Central Lot above Maritime Heritage Park, and the Depot Market Lot. See attached City of Bellingham Downtown Parking Areas Map.